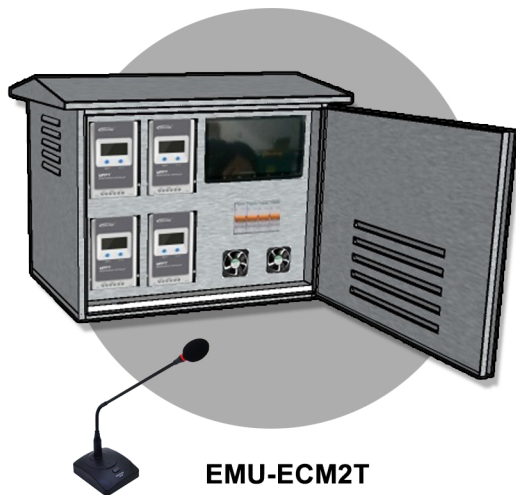
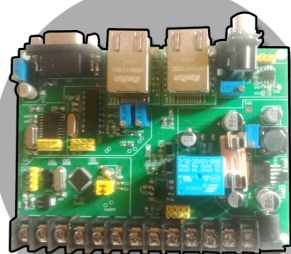
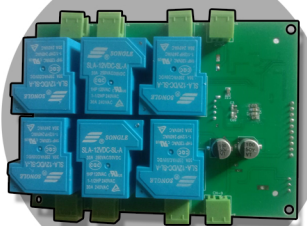
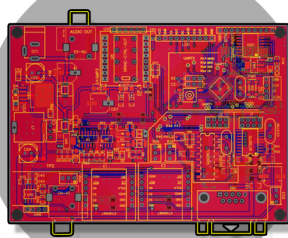


# EMU-Eseries

## Electronic Controller Module in TWS Sirens Tower



EMU-ECM2T



### Customization

- Customized available

## EMU-ECM2T Quickly and Effectively Activate Alert Sirens

- In a tsunami warning system, the electronic controller module interfaces with both automatic and manual inputs (from personnel).
- When a potential tsunami is detected, the controller assesses the threat and sends a signal to the sirens and speakers system.

### KEY FEATURES EMU-ECM2T

1. Electronic Controller Module : This is the main unit responsible for managing the communication and control functions in sirens tower of the warning system. It processes incoming signals or manual inputs and activates the sirens when necessary.
2. Siren Activation Buttons : This buttons allows authorized personnel to manually activate the tsunami sirens when a warning is needed. It provides a manual override in case an automatic sensors fail or when quick human intervention is required.
3. Safety Switch : The safety switch is a crucial feature designed to prevent accidental or unauthorized activation of the siren. Typically, this switch needs to be toggled or unlocked before the siren activation button can be pressed. This ensures that the sirens are only triggered during an actual emergency, avoiding unnecessary panic among the public.



### Technical

Warning Sound Storage Media : SD Card Minimum 4GB

Warning Sound : Minimum 6 Types

Siren Activation Mode :

- Local Activation using Push-On Button
- Remote Activation (Controller Unit)
- Remote Activation (HT)

Type of Dissemination

- Local Sirens/Voice Warning
- Broadcast Audio from the Control Unit/HT
- Audio from Local Microphones

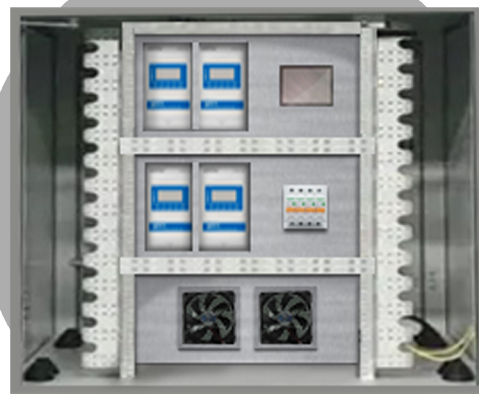
Communication Channel :

- Serial Port for Modem Frequency Shift Keying (FSK) Connection
- Serial Port for SBD Modem Connection
- Existing Siren Activation Interface
- Working Voltage : 12V DC
- Information Display : 3.5 inch (Minimum) TFT Display
- Activation Signal Transport : GSM, VHF Radio, and SBD-Satellite

Protection : High Load Current, Short Circuit, High Voltage Input, Surge Protection, High Temperature

GSM protokol : MQTT - Or Other By Request

VHF Modulation : Frequency Shift Keying (FSK) - Or Other By Request



Warning/  
Signal/  
Stackable



Signal &  
Electric Horn/  
Speakers



Vessels and  
Heavy-Duty  
Equipment



Explosion  
Proof



Warning  
Light Bar



Aviation  
Obstruction  
Lights



Signal Tower  
Lights



USB/ETN  
Signal Tower  
Lights



Electric Horn/  
Speakers



Industrial  
LED Lights